

COMPACTORS INC.

Mini Can Densifier

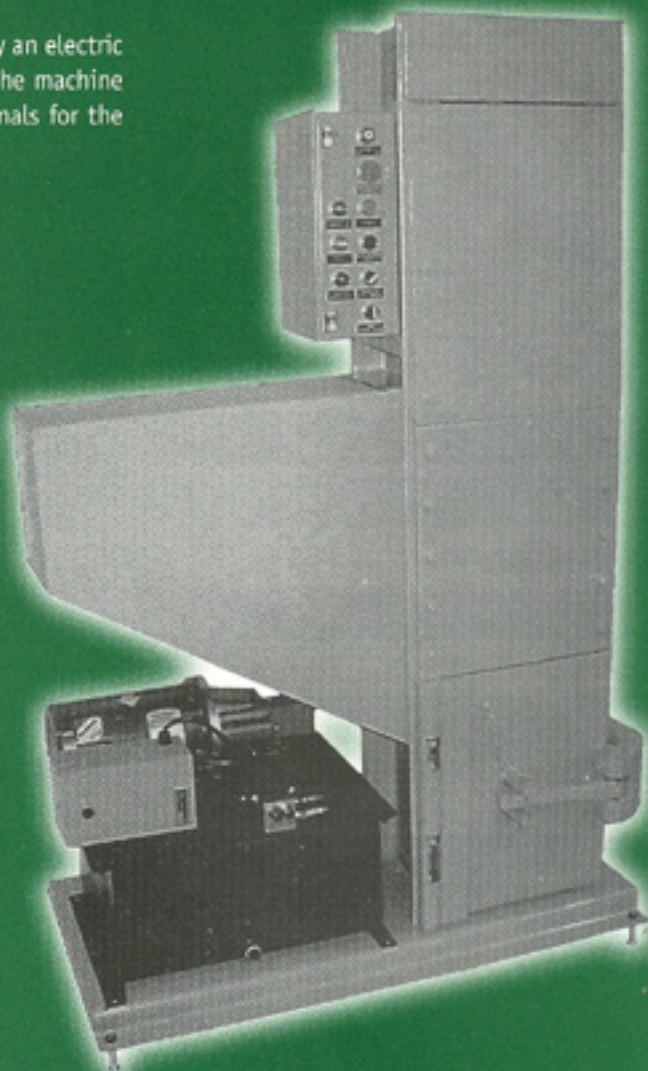
MODEL
10P

Designed for Shipboard and Recycling Center use.

The model 10P Densifier is designed for applications where a high density slug of beverage cans or metal cans is required but where space is limited.

Operation is fully automatic. The unit is activated by an electric eye which senses material in the loading hopper. The machine also senses when there is a complete slug and signals for the operator to unload the machine.

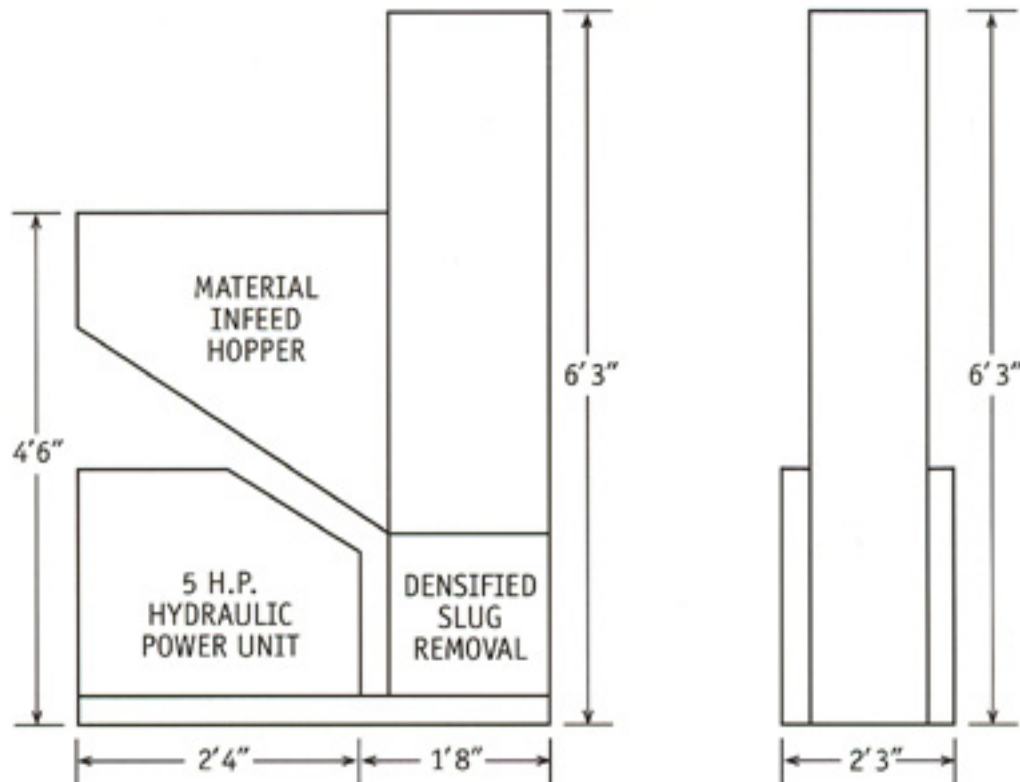
- Densified block size: 12" x 10" x 10"
- Contains 800 aluminum drink cans
- Weight: 25 lbs.
- Density: 36.75 lbs. / cu. ft.
- Densification Ratio: 35:1



Mini Can Densifier

Designed for Shipboard and Recycling Center use.

MODEL
10P



SPECIFICATIONS

Dimensions: 4'L x 2'3"W x 6'3"H

Shipping Weight: 1500 lbs.

Hopper Volume: 5.0 cu. ft. (200 cans)

Densified Block Size: 12" x 10" x 10"

Densified Block Weight: 25 lbs. (aluminum cans)

Densified Block Weight: 45 lbs. (steel cans)

Cycle Time: 75 Seconds

Throughput: 80 lbs/hr (2500 aluminum cans)

Throughput: 75 lbs/hr (steel cans)

Capacity: maximum 1-gallon cans

Hydraulic: A power unit with a 10-gallon hydraulic reservoir is provided. Industry standard components are used to make service fast and easy. The compaction cylinder has a 5" diameter bore with a 2-1/2" diameter rod.

Electric: The equipment utilizes a 5 horsepower, washdown duty, 3 phase, 208/230/460 volt, 60 Hz. or 190/380 volt, 50 Hz. motor. The equipment is furnished with a motor starter. Control voltage is 110 volt, single phase.

Finish: Painted with a gray industrial grade enamel to provide protection from deterioration.

Specifications Subject To Change Without Notice

COMPACTORS, INC.
CHICAGO
TRASHPACKER

Post Office Box 3173 • Hilton Head Island, South Carolina 29928

Tel: 843-686-5503 • Toll Free: 1-800-423-4003 • Fax: 843-686-3290 • Email: info@compactorsinc.com

or visit our Web site at www.compactorsinc.com