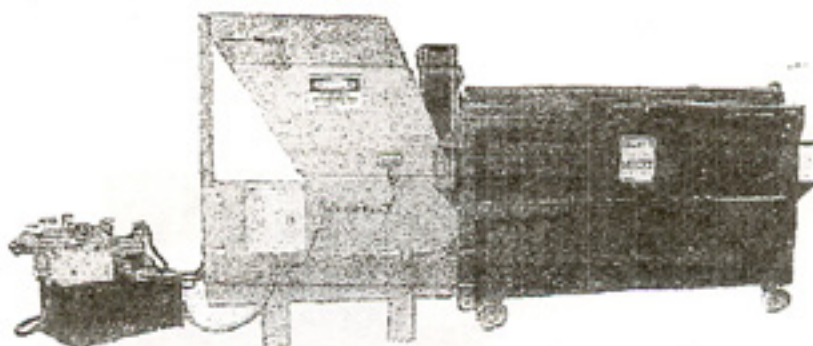


**COMPACTORS, INC.**  
*aka* CHICAGO  
**TRASHPACKER**

520  
 SHORT CONTAINER  
 PACKER SERIES



**OVERVIEW**

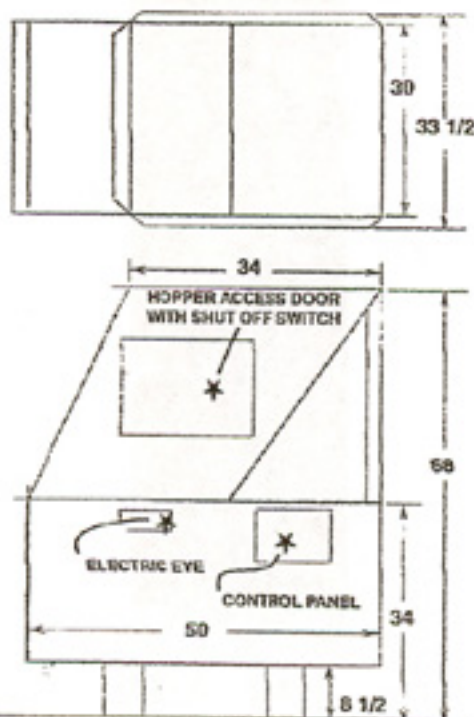
• **Application:** A series of industrial stationary container packers typically installed in multi-story buildings. These machines are ideally suited for those situations where shortened room length makes it impossible to use a normal length container packer. Through the innovative use of two cylinders mounted crosswise within the machine, the overall length of the machine can be shortened without sacrificing the compaction chamber size.

The machine accepts trash received from a trash chute and compacts into a two cubic yard front or rear load compaction container. The machine operates automatically by an electric eye, providing unattended operation until the container is full at which time it is removed from the machine and wheeled outside for pickup. This system reduces handling of waste and requires less custodial attention, translating into savings for owners and property managers. Also, because the volume of trash is significantly reduced during compaction, fewer pickups by the hauler are required, cutting disposal costs.

• **2 Models to Choose From:** The series consists of the Model 520T5 and the Model 520T1. The Model 520T5 comes equipped with a 5 horsepower power unit for high volume applications. For smaller buildings, the Model 520T1 provides an economical solution with a 1 horsepower power unit.

**SPECIFICATIONS:**

• **General Description:** A fully automatic, hydraulically operated packer capable of displacing up to 35 cubic yards of trash per hour, packing into a front or rear load compaction container. The machine body and ram body are 1/4" steel. The hopper is constructed of 10 gauge front and sides with a 1/4" rear impact plate to take the force of falling refuse.



• **Features:** A photoelectric sensor starts the compaction cycle when refuse enters the hopper and turns the machine off when hopper is empty. Compactor automatically shuts off if an uncrushable object is encountered. An unload light is provided to signal a full container. A service access door is provided in the hopper, equipped with an electrically interlocked safety switch which prevents the machine from operating if the access door is open. An emergency stop button is provided for safety.

• **Hydraulic:** A prepackaged and assembled power pack is provided. Industry standard components are used in order to make service fast and easy. The two compaction cylinders have a 2-1/2" bore, 1-3/8" rod.

• **Electrical:** 520T5: 3 phase, 60 Hz, 4 wire, 5 HP motor operated at 208 volt, 15 amps. Other voltages are available upon request. Furnished with motor starter. Utilizes 115 volt control and logic circuit. Model 520T1: 115 volt, 60 Hz, single phase, 1 HP, 15 amps. Power unit mounted on back of machine.

• **Finish:** Painted with a blue industrial grade enamel to provide protection from deterioration.

• **Containers:** Heavy duty construction to insure long life. Floors are 10 ga. Sides are 12 ga. Provided with heavy duty, phenolic resin casters, 2 fixed and 2 swivel. Available in front or rear load. One side latching available (optional) for installations where latching can only be accommodated on one side.

	520T5	520T1
Chamber Capacity	8.6 cf, .32 cy	8.6 cf, .32 cy
Compaction Force Max.	19,625 lbs	7,850 lbs
Ram Face Pressure, Max.	36.3 psi	14.5 psi
Volume Displacement	33 cy/hr	24 cy/hr
Cycle Time	35 seconds	57 seconds
Weight, ( w/o container)	1,650 lbs	1,500 lbs
Overall Dimensions	50"Lx44"Wx68"H	50"Lx44"Wx68"H
Overall Length, w/2cy front load container	10'5"	10'5"
Overall Length, w/2cy rear load container	9'10"	9'10"

P.O. Box 3173 • Hilton Head Island, SC 29928  
 843.686.5503 • FAX: 843.686.3290 • TOLL-FREE: 1.800.423.4003  
 www.compactorsinc.com • info@compactorsinc.com