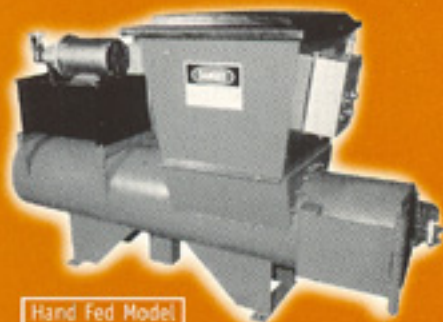


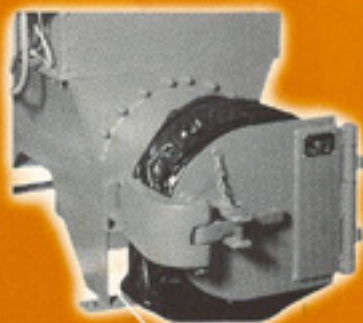
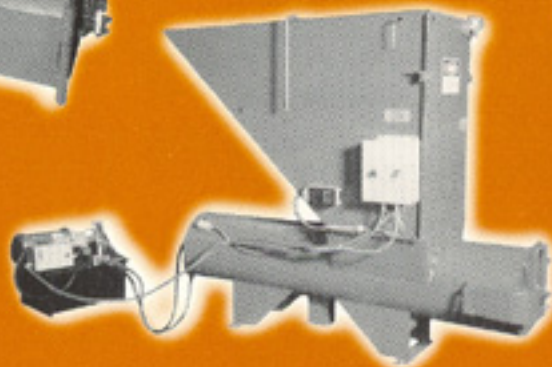
# COMPACTORS INC.

Single Bag, Bulkhead Compactor

MODEL  
10T



Chute Fed Model



## Overview

**Application:** The 10T is a single bag, bulkhead compactor, which produces pre-cut, space-saving blocks of compacted refuse. These blocks are uniform in size and density. The chute fed model is designed for multi-story buildings. The hand fed model has varied applications, such as schools, hospitals, etc. The 10TM is a slightly smaller version for applications where a standard machine will not fit.

## Specifications

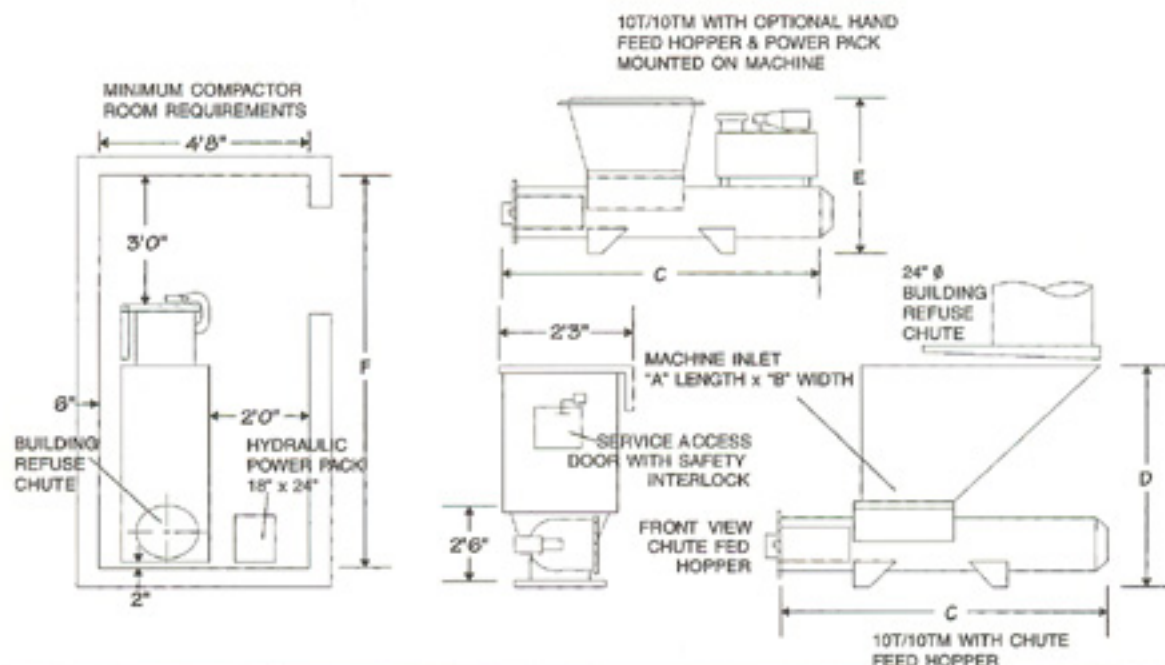
**General Description:** A hydraulically operated concentric ram compactor with hardened cast ductile iron shear teeth compacting against a heavily reinforced door with a quick opening latch. The compaction body and compaction chamber are tubular in shape and form one continuous integral body of structural 3/8" steel plate. The ram is similarly constructed of 1/4" plate with a compaction face of 3/4" plate. Operation is exceptionally quiet.

**Features:** Heavy duty, 4 mil plastic bags are suggested for use with this machine. The bag is placed on the machine, the bulkhead door closed, and trash is compacted directly into the bag, minimizing handling by the operator. When full, the door is opened and the compacted slug is ejected from the machine. A photoelectric switch with solid state components starts compaction cycle when refuse enters hopper (chute fed model) and turns it off when hopper is empty. The hand fed model is equipped with single cycle controls. The compactor automatically shuts off to prevent damage from an oversized or uncrushable object. A light indicates when refuse is compacted and machine is ready to be unloaded. The chute fed model has a service access door located in the front of the hopper. The hand fed model has a plastic lid for ease of feeding. Both are equipped with an electrically interlocked safety switch.

# Single Bag, Bulkhead Compactor

# MODEL 10T

Dimensions	Inlet Length - A	Inlet Width - B	Machine Length - C	Machine Height Chute Fed - D	Machine Height Hand Fed - E	Minimum Room Length - F
10T	1'-9 1/2"	1'-11 1/2"	7'-6"	6'-3"	4'-3"	10'-7"
10TM	1'-8"	1'-11 1/2"	6'-3 1/4"	5'-9"	4'-3"	9'-0"



**Hydraulic:** A prepackaged and assembled power unit is provided. Quality components are used to provide long life and low maintenance. The compaction cylinder for the 10T model has a 3" bore, 1-3/4" rod. The 10TM cylinder has a 3" bore, 1-1/2" rod. The hydraulic power unit is normally mounted on the floor along side the chute fed units, but can be mounted on the rear of the body. On the hand fed model, the power unit is normally mounted on the rear of the machine.

**Electrical:** 208 volts, 60 Hz, 3 phase, 4 wire, 5 HP, 15 amps. Combination control and logic box utilizes 115 volt circuit. Easy to use control panel mounted on machine.

**Finish:** Painted with a blue industrial grade enamel to provide protection from deterioration.

Model No.	10T	10TM
Chamber Capacity	2.9 cf	2.6 cf
Ram Face Pressure	88 psi	88 psi
Compaction Force	20,000 lbs.	20,000 lbs.
Reservoir Capacity	10 gal.	10 gal.
Cycle Time	26 seconds	22 seconds
Snout Length (Slug Size)	22"	19"
Estimated Slug Weight, Max.	75 lbs.	65 lbs.
Shipping Weight	1,400 lbs.	1,200 lbs.

Specifications Subject To Change Without Notice

## COMPACTORS INC.

Post Office Box 5918 • Hilton Head Island, South Carolina 29938

Tel: 843-686-5503 or 800-423-4003 • Fax: 843-686-3290 • Email: mjp2150@aol.com

or visit our Web site at [www.compactorsinc.com](http://www.compactorsinc.com)